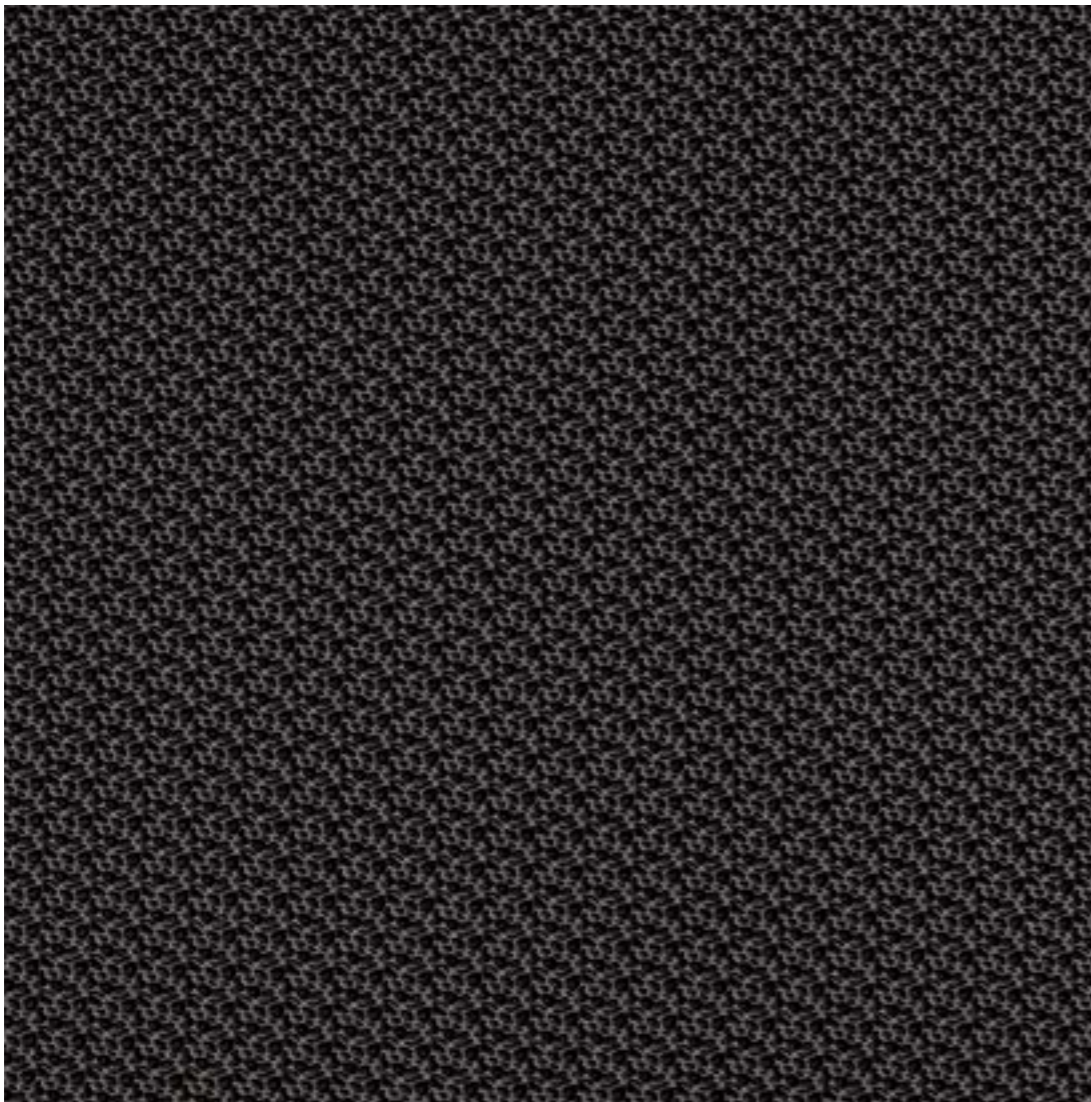


... WITH SPRADLING
it's covered®











HIT-8957
LEAD



is a proven vinyl protective coating that is engineered to create a tough, effective barrier against germs, abrasion and stains.

Ultra Hi-Loft²™, a textured high-pile spun-polyester, was developed to enhance the touch and feel for select contract quality coated fabrics, that improves tailorability, and provides a distinctive pleasing appearance on any seating application. Ultra Hi-Loft²™, the next generation of Spradling's popular Hi-Loft™ backing is the featured textile on Spradling's new contract designs – DIAMANTE, HITCH and VOGUE.

-  *Exzellente Abriebfestigkeit / Resistencia a la abrasión / Resistance a l'abrasion / Abrasion resistant / Resistenza all'abrasione / Doskonała odporność na ścieranie*
-  *Wasserabweisend / Impermeabilidad / Imperméabilité / Impermeability / Impermeabilità / Wodoodporny*
-  *Lichtechtheit / Durabilidad del color a la luz / Résistance à la lumière / UV resistant / Resistenza raggi solari / Odporny na promieniowanie UV*
-  *Kältebruchresistent / Resistencia a bajas temperaturas / Résistance aux basses températures / Low temp. resistant / Resistenza alla rottura da freddo / Odporny na niskie temperatury*
-  *Antimikrobiell ausgerüstet / Resistencia a microorganismos / Protection contre des micro-organismes / Mildew resistant / Antimuffa / Odporny na pleśń*
-  *Einfache Reinigung / Fácil limpieza / Facilité d'entretien / Easy to clean / Facile da pulire / Łatwy do czyszczenia*
-  *Flammhemmend ausgerüstet / Retardancia al fuego / Retardement au feu / Flame retardant / Ritardanza al fuoco / Produkt niepalniony*
-  *Chemikalienbeständig* / Resistencia a químicos* / Résistance aux produits chimiques* / Chemical resistant* / Resistenza chimica* / Odporny na chemikalia**

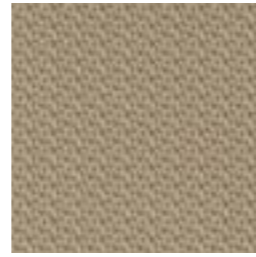
**Bitte anfragen / Pregunte por asesoría / Sur demande / Upon request / Si prega d'informarsi / na życzenie*



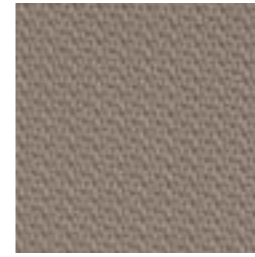
HIT-8962
ICEBERG



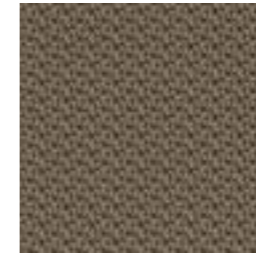
HIT-8963
AVALANCHE



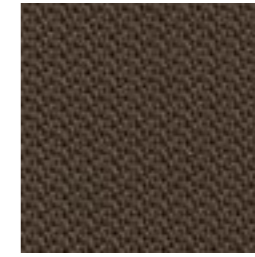
HIT-8965
STARIFSH



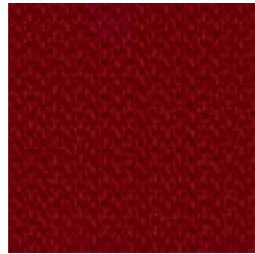
HIT-8964
SEASHELL



HIT-8912
PUTTY



HIT-8916
NEUTRA



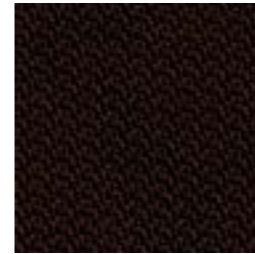
HIT-8915
LAVA



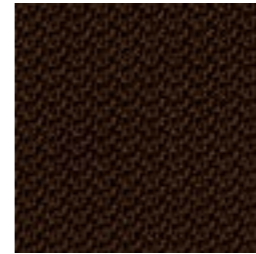
HIT-8994
RAISIN



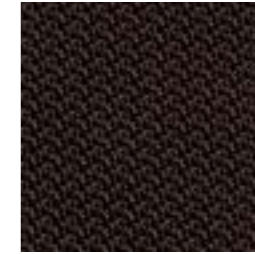
HIT-8995
CIRUELA



HIT-8920
JAVA



HIT-8953
MAHOGANY



HIT-8901
METEORITE



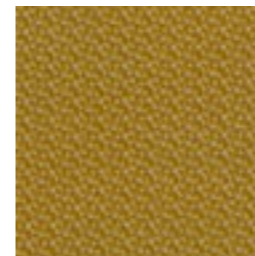
HIT-8911
BRILLIANT ORANGE



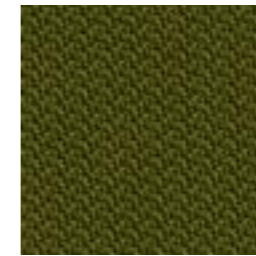
HIT-8991
TANGERINE



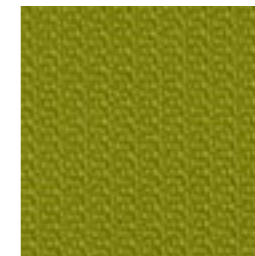
HIT-8990
FREESIA



HIT-8909
SUNFLOWER



HIT-8922
LIMEADE



HIT-8913
ZEST



No Master samples (not suitable for colour matching and quality control / testing purposes).
Commercially acceptable colour shifts may occur between production runs. As such lot separation is recommended.

All SPRADLING® products and services are offered and sold subject to the SPRADLING® General Terms and Conditions of Sale, available for download under www.spradling.eu. Please follow our manufacturing and maintenance guidelines, also available under www.spradling.eu. In the event of failure to comply with these guidelines, no liability is assumed by the manufacturer and any warranty claim(s) (if applicable) expire.



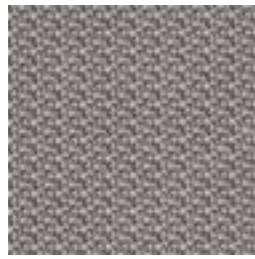
MARINE



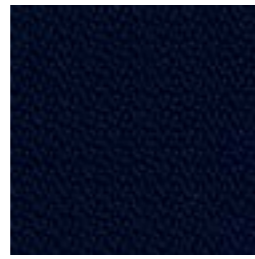
AUTOMOTIVE



OUTDOOR



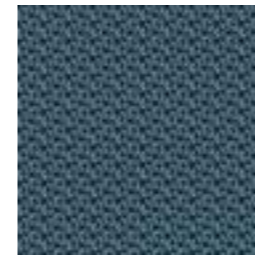
HIT-8960
ALLOY



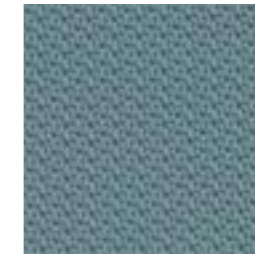
HIT-8918
INDIGO



HIT-8914
SAPPHIRE



HIT-8998
CERULEAN



HIT-8999
PORCELAIN



HIT-8900
PASTEL



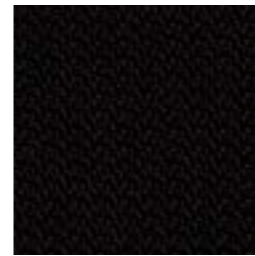
HIT-8961
ZINC



HIT-8903
PLATINUM



HIT-8904
CARBON



HIT-8988
LAKRITZ



No Master samples (not suitable for colour matching and quality control / testing purposes).
Commercially acceptable colour shifts may occur between production runs. As such lot separation is recommended.

All SPRADLING® products and services are offered and sold subject to the SPRADLING® General Terms and Conditions of Sale, available for download under www.spradling.eu. Please follow our manufacturing and maintenance guidelines, also available under www.spradling.eu. In the event of failure to comply with these guidelines, no liability is assumed by the manufacturer and any warranty claim(s) (if applicable) expire.



MARINE



AUTOMOTIVE



OUTDOOR

COATED FABRICS